



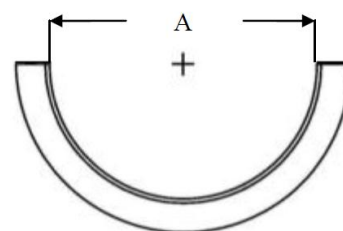
Grating Accessories - Pipe Sleeves -

Technical Data & Fire Safety

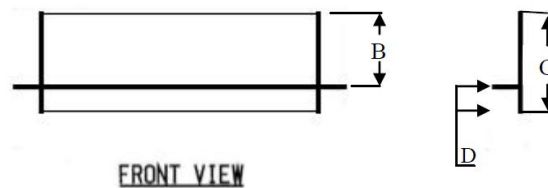
Material: Polyester resin
 Incombustibility: ASTM E84-05 Class 1
 Flame spread: < 25
 Temperature area: - 60° C ⇨
 Color: Grey (UV-resistant)



Art. no.:	Size	A	B	C	D	Weight kg
PSL6	6"	6"	4,5"	6"	1,5"	1,0
PSL8	8"	8"	4,5"	6"	1,5"	1,3
PSL10	10"	10"	4,5"	6"	1,5"	1,6
PSL12	12"	12"	4,5"	6"	1,5"	2,0
PSL14	14"	14"	4,5"	6"	1,5"	2,3
PSL16	16"	16"	4,5"	6"	1,5"	2,7
PSL18	18"	18"	4,5"	6"	1,5"	3,0
PSL20	20"	20"	4,5"	6"	1,5"	3,3
PSL22	22"	22"	4,5"	6"	1,5"	3,7
PSL24	24"	24"	4,5"	6"	1,5"	4,0
PSL26	26"	26"	4,5"	6"	1,5"	4,3
PSL28	28"	28"	4,5"	6"	1,5"	4,7
PSL30	30"	30"	4,5"	6"	1,5"	5,0
PSL32	32"	32"	4,5"	6"	1,5"	5,3
PSL34	34"	34"	4,5"	6"	1,5"	5,7



PIPE SLEEVE PLAN



FRONT VIEW

Other sizes can be delivered upon request

Art. no.:	Description	
PSB-4	Bolt set w/insert hold downs (4 ea)	0,4
PSB-6	Bolt set w/insert hold downs (6 ea)	0,6

Sleeves <= 30" need 4 bolts.
 Sleeves > 30" need 6 bolts.